

Best in class – now version 4.0



 malwa



Welcome to the world of Malwa

When I built the first Malwa almost ten years ago, the idea was to create an effective machine for thinning woodland without tearing up the land and forests.

And here we are now, 200 machines later. In fact, the first machine in the version 4.0 series is also machine 200 from Malwa.

I must admit that my heart beats a little faster when I think about it.

The original idea of more considerate thinning with a view to ensuring a more timber-rich stock with more main stems left for final felling has firmly taken root today, and now appears self-evident.

However, the journey to get here was by no means straight and simple. Malwa has always been supported and encouraged primarily by private land-owners worried about their forests and fields, and by contractors looking for machinery better adapted to thinning and ensuring high productivity.

The major forestry companies, on the other hand, have often clung onto their belief that big machines designed for final felling are also suitable for thinning. Today, thankfully, we can see that they are beginning to change their minds and are increasingly commissioning Malwa groups to handle their thinning operations – resulting in more and more members and private forest owners receiving precisely the thinning work they want.

Why change something that is already good?

Occasionally, I encounter questions or comments along the lines of: “Why change a machine that is already so good?”

My response is always the same: We’re like Volvo, BMW and Mercedes. Both we and they are constantly working with development, assimilating new technology and listening to our users with a view to making what’s good even better.

Everyone wins

New directives from the EU mean challenges and set the stage for significant change and development work. The new requirements on engines are leading to a whole new generation of engines with appreciably reduced emissions of particles and nitrous oxides in particular.

In the same way as previously, we have chosen to use engines from CAT – but now in a 2.8 litre version with exactly the same output and power as the former 3.4 litre engines (55 kW / 75 hp). Personally, I also think that the new engine has a range of excellent features, great properties and an improved and attractive torque curve.



Complete review

And while we were working on the new engine, we decided to launch a complete review and overhaul of our machines. As you can see from this brochure, we haven't lain idle in any respect and we're proud to present a whole range of improvements and modifications incorporating new technology.

Of course, there are plenty of aspects we have left unchanged, simply because there are currently no better options available. For example, advanced logging with hydrostatic transmission – which is something that is

otherwise the exclusive preserve of the really big machines. Or the separated pump system, with one pump for transmission/logging and another for work hydraulics (the crane and harvester head). This makes it possible to manoeuvre the crane with great precision at the same time as moving the machine itself.

Or ... – well, there's so much to tell, but we'll come back to all this when we meet up in person and you can see the machines in action.

Thank you for taking the time to read this. Please don't hesitate to get in touch with any thoughts or comments you may have.

Magnus Wallin

Founder and co-owner

Malwa 560H Harvester

Built for contractors, with a powerful CAT engine that meets the new, stricter environmental requirements (EU Step V). Excellent cab and ergonomics. Big machine-class drive train and work hydraulics. Crane tilt and bogie lifter. Cut capacity: 42 cm with Log Max 928. Perfect for stand-operative first and second thinning. Leaves few or no tracks in forests and fields.



Malwa 560C Combi

Proven reliable, high-performance harvester and forwarder in one and the same machine.

Powerful CAT engine that meets the new, stricter environmental requirements (EU Step V).

As a harvester, provides 42 cm cut capacity with a Log Max 928 harvester head.

As a forwarder, it has a 5.5-tonne load capacity and HSP grip.

Switching from harvester to forwarder takes just 20 minutes. The record is actually 9 minutes.





Malwa 560F Forwarder

Stand-operative forwarder with a load capacity of 5,5 tonnes or 9 tonnes when combined with a trailer.

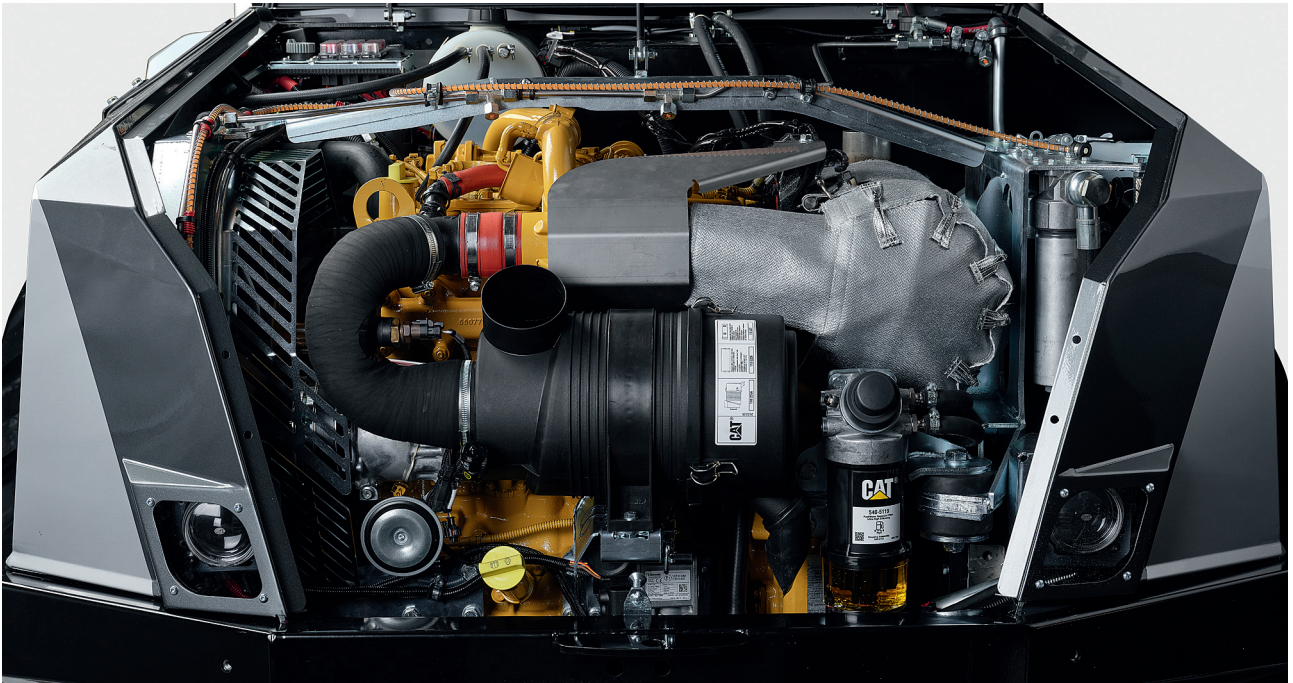
Powerful CAT engine that meets the new, stricter environmental requirements (EU Step V).

Choose between the FC45 with 6.1 metre reach or the FC45DT with 8.2 metre reach – professional cranes with excellent motion geometry. HSP grip or tilt grip.

Small turning radius and excellent tracking translate into peerless driving properties in demanding terrain. With caterpillar tracks, simply unbeatable on sensitive ground and wetland.



A completely new generation of engines



The new CAT engine has been built to accommodate – by a good margin – the EU step V regulations, with their requirements for reduced particle content and lower nitrous oxide levels.

A completely new generation of 2.8-litre engines with excellent features and the same output and power as Malwa's previous CAT engines – namely 55 kW / 75 hp. In addition, an improved and more attractive torque curve.

The new design of the engine and its improved suspension system reduce the sound energy in the cab by more than 40 %.

Simplified daily service: all control points and filters gathered together in front, under the hood.



Powerful crane

We are talking seriously strong. Crane with a completely new design, extremely strong struts and crane foot.



Easy-to-operate bogie lifter

Bogie lifter – easy to operate and an important function in improving navigability and versatility.



Fixed load bunks

Small change – great benefit.

Fixed load bunks, now with smart sorting struts. "The timber you put there, stays there."

Version 4.0 – summary of new features

- The biggest change is under the hood, where you will find an eco-friendly, quieter CAT engine with greater torque and faster response under working load.
- Together with the improved engine suspension system, the new engine cuts the sound energy in the cab by more than 40 %.
- For the operator, this means a quieter working environment, larger and clearer screens, and all functions and controls simple to operate and within easy reach.

Much of the work that went into version 4.0 had to do with improving operational reliability, performance, service-friendliness and comfort even further – changes made in close consultation with contractors and landowners.

For example

- new, more powerful crane and crane lighting
- work pump for crane and harvester head now from Rexroth
- simplified daily service: all control points and filters gathered together in front, under the hood
- motor hood with gas damper and wide opening for service and checks
- touchscreen and larger display for monitoring the machine functions, pressure and levels
- new generation of IQAN control system with powerful computer to provide faster response and more functions
- modem for sending information about your Malwa directly to your smartphone
- larger 74-litre diesel tank allows the forwarder 18 hours of operation and the harvester – with an extra tank – as much as 24 hours
- improved chain transmission with 25 % stronger chain in the bogie beam – translates into longer service life and improved operational reliability
- newly designed control cylinders mean even greater sensitivity and improved operational reliability
- new front with improved visibility of the area immediately in front of the machine
- extremely good work lighting with up to 28 light points, forward-facing full beam spotlights, with full- and half light options
- the cab windows are made of a new type of glass with improved optical properties, ensuring even better visibility, and tinted to counteract the heat in sunny conditions
- new electric seat lock operated from the control panel, as well as the option to lock the seat at an angle of plus/minus 45 degrees when operating the crane
- forwarders now with a smooth load gate and fixed load bunks with sorting struts
- etc.

The list is long. You can find all the features and changes on our website and in the technical information section of the product data sheets for the respective models.



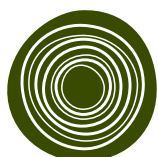
Malwa directly to your smartphone

Modem for sending information about your Malwa directly to your smartphone.

You can synch your new Malwa directly with your smartphone and read off different values, levels, pressures, etc. All data can also be transferred via the internet to your computer or to a Malwa service technician for analysis and diagnosis.

The woods await

Malwa 560F Forwarder. HSP grip and FC45 crane. Improved motion geometry. Fixed load bunks, with sorting struts. Loads 5.5 tonnes – 9 tonnes with trailer. Peerless driving properties in demanding terrain. With caterpillar tracks, simply unbeatable on wetland.



malwa

www.malwaforest.com

Malwa Forest AB
Fältspatsvägen 1
SE-511 91 Skene
+46 320 79 4450
info@malwaforest.com